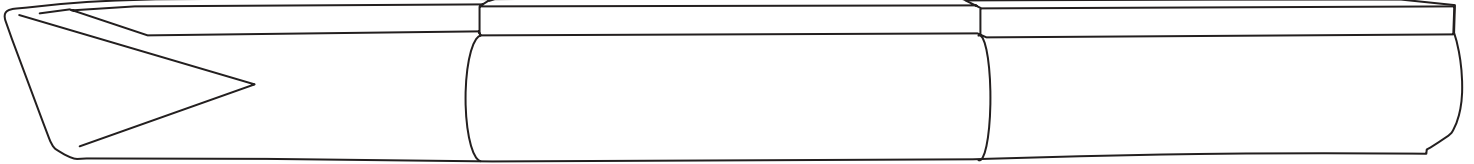


36" Floating Pontoon

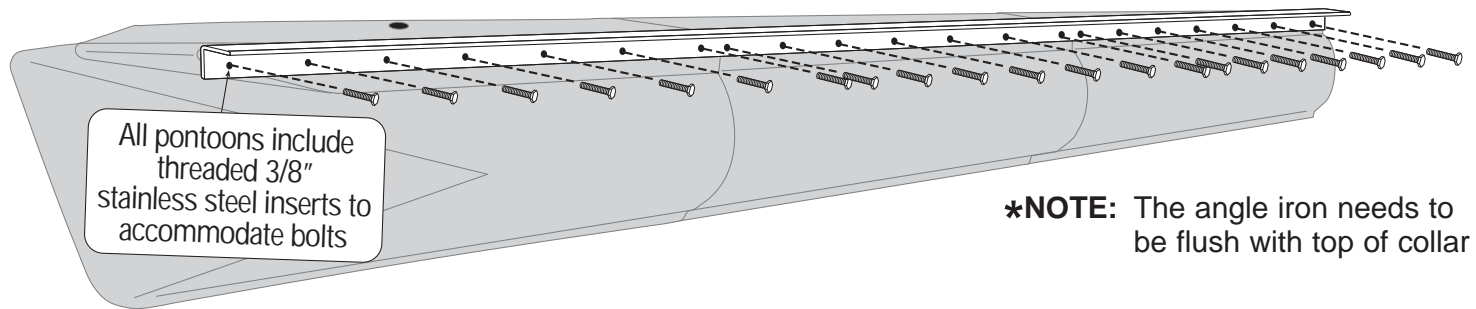
Installation Instructions

Thank you for purchasing a Floatation Pontoon.
The greatest idea since the Indian canoe!



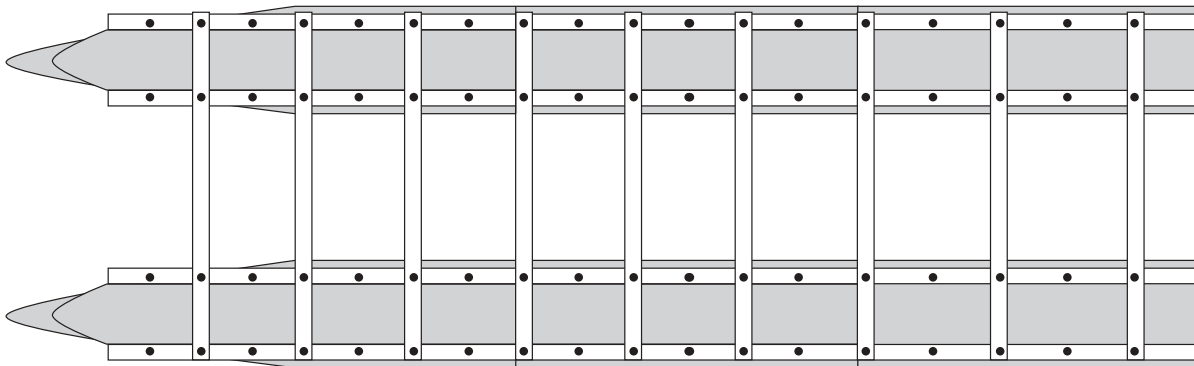
To join together pontoon sections, you will need:

- 3/4" Hex Head Bolt; 3/8" Medium Course Thread.
- Lock Washer
- 3" x 4" x 1/4" thick aluminum Angle Irons. Angle irons need to flange out at top (see illustration).

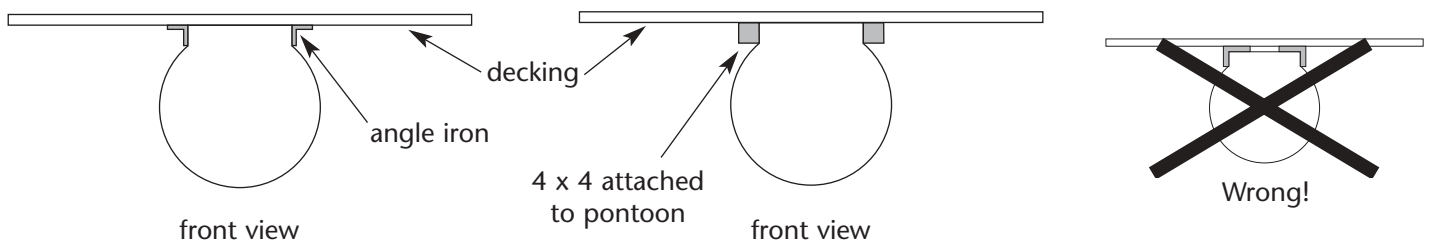


To join pontoons together, you will need:

- Cross Members, which bolt into the top of the Angle Iron.



Suggestions for mounting decking



PRODUCT WARRANTY

Wilson Distribution, Inc. hereby warrants the design, materials and workmanship of this pontoon product for a period of two (2) years from the date of purchase.

This warranty shall be limited to repair or replacement of the product. This warranty excludes all other incidental and consequential damages and shall be voided by misuse or abuse of the product.