

# 36-inch Diameter Modular Plastic Pontoons

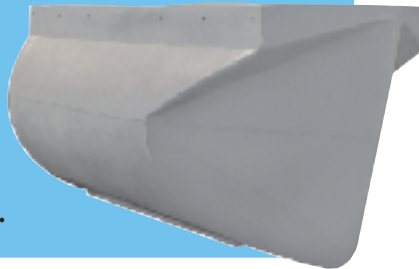
*The best idea since the Indian canoe!*

## Connected Modules



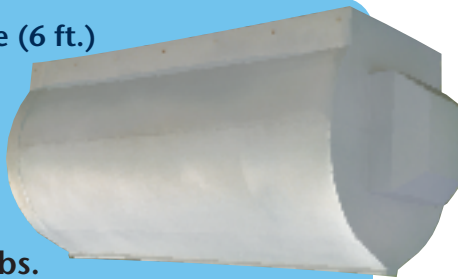
19 ft. log (three modules)

## Bow Module (7 ft.)



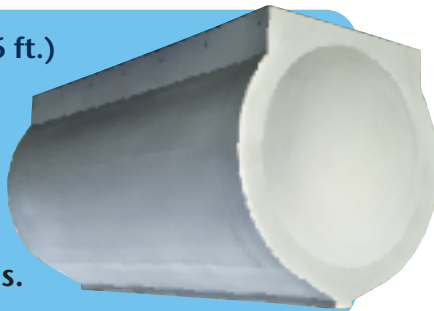
Weight: 173 lbs.

## Middle Module (6 ft.)



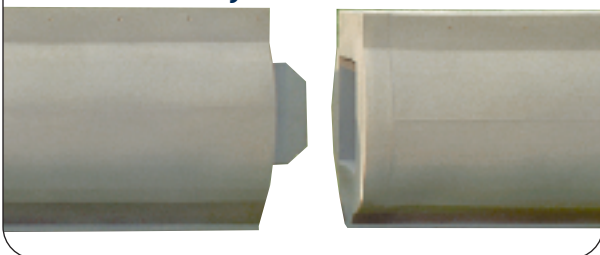
Weight: 191 lbs.

## Stern Module (6 ft.)



Weight: 187 lbs.

## Modules easily connect



Wilson Distribution pontoons are constructed out of medium density polyethylene (MDPE). Wilson pontoons are ideal for salt water because they won't rust or corrode. They're excellent replacements for old steel or aluminum pontoons. Wilson pontoons are used in pontoon boats, houseboats, barges, bridges, work boats, party boats, pumping stations—they're perfect for any application that uses pontoons. Features include:

- Heavy-duty construction: pontoon modules have 3/8" thick walls. Wilson pontoons will withstand a greater impact than aluminum pontoons.
- Modular construction: bow modules are 7 ft. in length, middle and stern modules are 6 ft. in length—easily allowing for configurations of the most popular application sizes (i.e. 7 ft., 13 ft., 19 ft., 25 ft., etc.).
- All pontoon modules are filled with closed cell polyurethane foam for greater structural stability, which also helps retain shape over the life of the module. Punctures will not collapse the pontoon module, and it won't fill with water.
- Each module supports 2600 lbs. fully submerged.
- Rectangular collar has threaded stainless 3/8" molded inserts for quick attachment.
- Maintenance free: no bottom painting is required. Just pressure-wash to clean.
- UV protected.
- Standard color: grey.

**WILSON**  
Distribution, Inc.

461 Smullton Road  
Rebersburg, PA 16872  
814-349-5300  
toll free: 877-456-2531  
fax: 814-349-5340  
e-mail: [info@plasticpontoon.com](mailto:info@plasticpontoon.com)  
[www.plasticpontoon.com](http://www.plasticpontoon.com)